

CABLE GUARD RAIL REQUIRED.

STATION	LEFT	RIGHT	Length
Sta 606+96 to 607+23	40	40	27
" 618+02 " 618+50	48	48	48
Sta 606+76 to 607+23	40	48	48
" 618+02 " 618+50	48	48	48

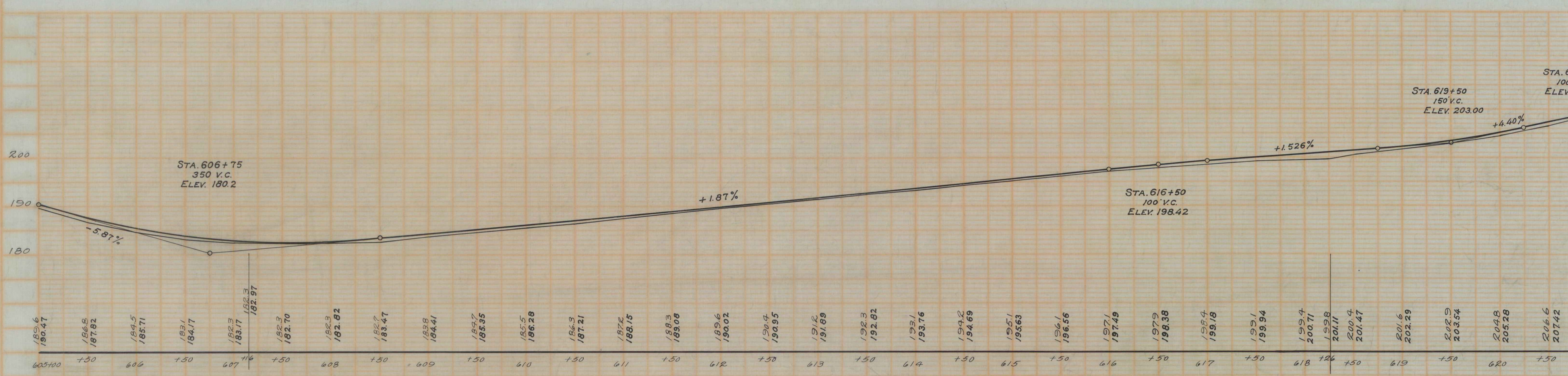
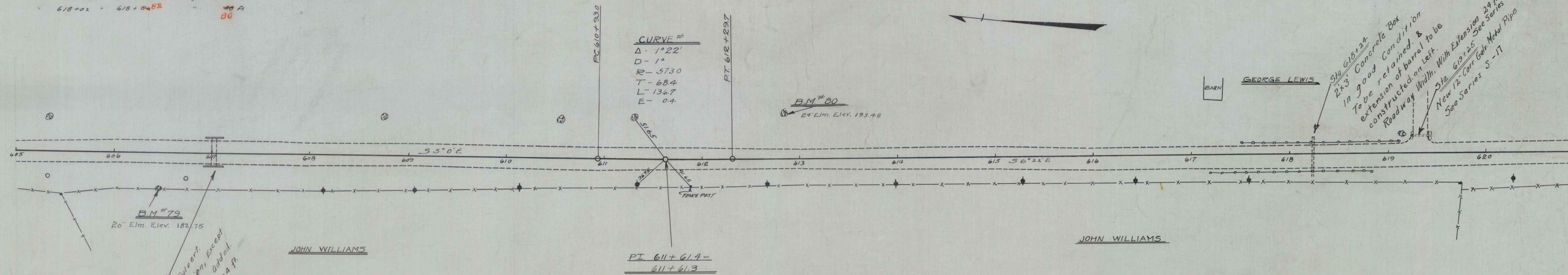
DRIVEWAY CULVERTS REQUIRED.

Sta 618+25 Left 12' corr. Galv. Metal Pipe 20' ft
 Concrete Class B (1-2-4) 11' Cur. 4 ft

CULVERT REPAIRS REQUIRED.

Sta 618+05 Footings to be added
 Concrete Class A (1-2-4) 9.6 Cur. 4 ft
 Sta 618+24 (Extension of barrel is to be constructed)
 Concrete Class A (1-2-4) 3.6 Cur. 4.5
 Reinforcing Steel 220 Pounds 239

FED. ROAD DIST. NO.	STATE	FED. AID PROJ. NO.	FISCAL YEAR	SHEET NO.
9	VI	720	1920	12



B.M. NO. 79 ← SPIKE IN 20' ELM, 38' RIGHT OF STA. 606+96, ELEV. 182.75
 B.M. NO. 80 ← SPIKE IN 24' ELM, 45' LEFT OF STA. 612+87, ELEV. 193.48

SERIES F. NO.
 SHEET 13 of 14